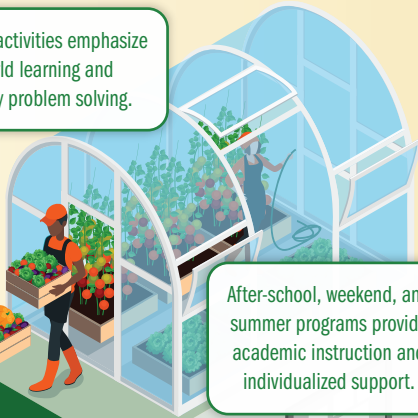


What the Four Pillars of Community Schools Look Like in Action

Enrichment activities emphasize real-world learning and community problem solving.



Parents, students, teachers, principals, and community partners build a culture of professional learning, collective trust, and shared responsibility using strategies such as site-based leadership teams and teacher learning communities.



Collaborative Leadership and Practices

After-school, weekend, and summer programs provide academic instruction and individualized support.



Expanded and Enriched Learning Time and Opportunities

Promoting interaction among families, administration, and teachers helps families to be more involved in the decisions about their children's education.



Active Family and Community Engagement

Schools function as neighborhood hubs. There are educational opportunities for adults, and family members can share their stories and serve as equal partners in promoting student success.



A dedicated staff member coordinates support programs to address out-of-school learning barriers for students and families.



Integrated Student Supports

Mental and physical health services support student success.

